

Coburn Ultima 2F

Concealed Door Closer

Ultima | Concealed Door Closers
Coburn Product Data Sheet



Features

- Concealed door closer with adjustable closing and latching speeds
- Rack and pinion mechanism
- Slim body ideal for thin doors
- Hold open arm comes as standard
- Non-handed: suitable for left and right hand opening doors

Technical Specifications

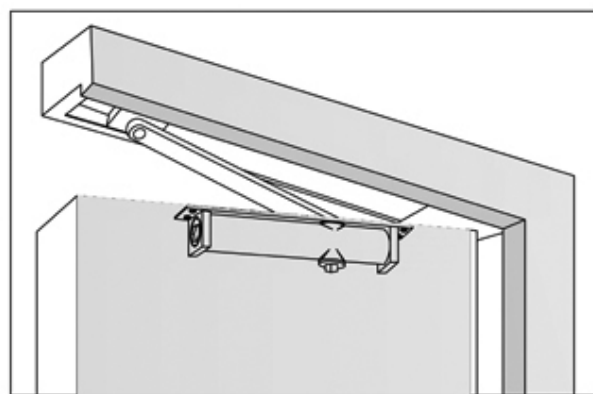
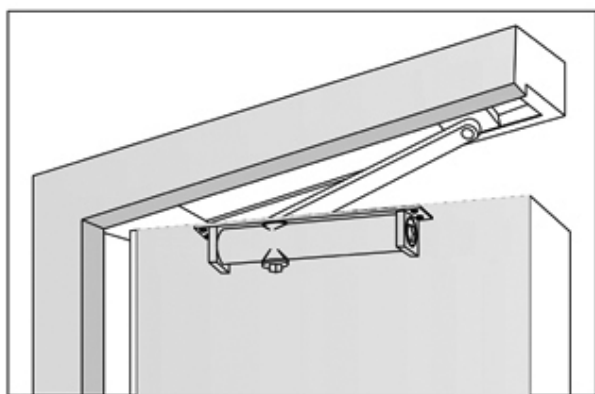
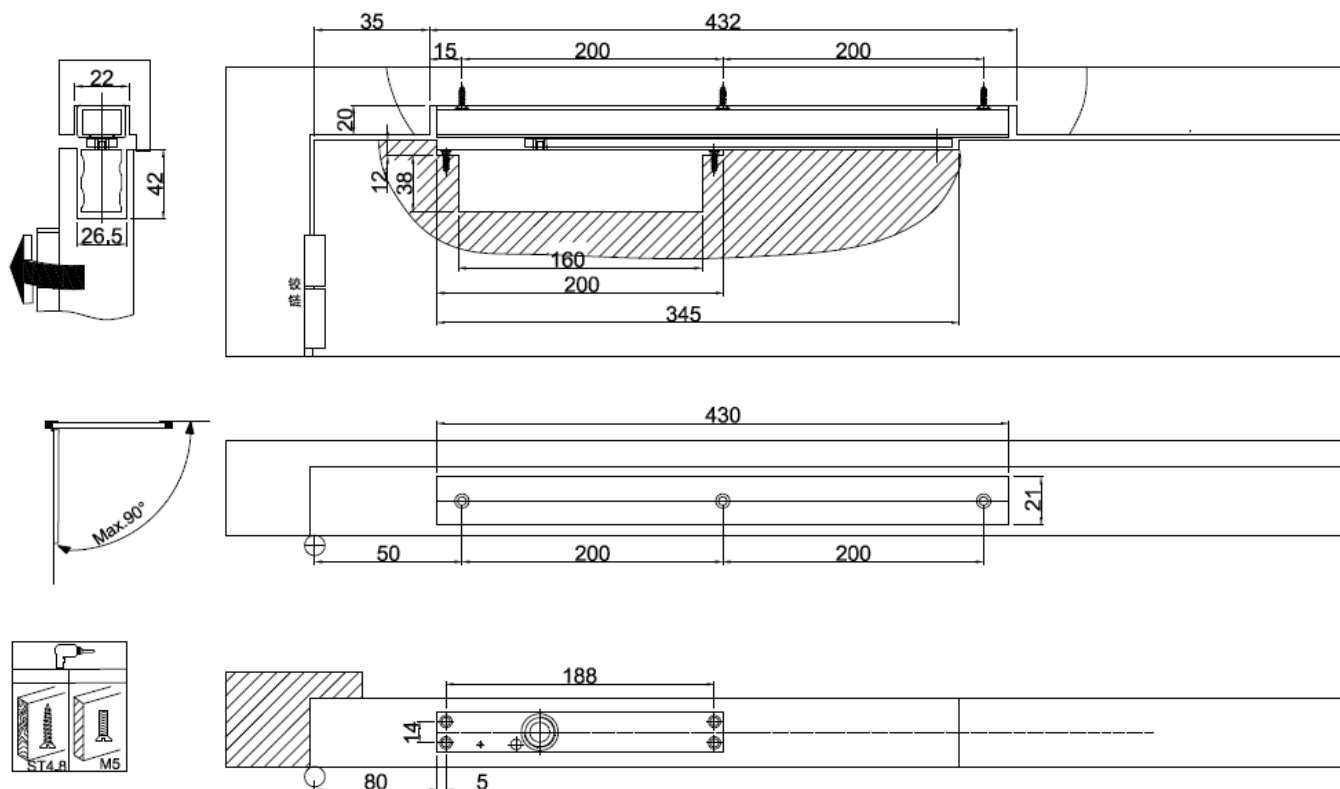
- Door Weight: 25 - 45kg
- Maximum Closing Width: 850mm*
- Closing Force: Fixed Size 2
- Dimensions: 160mm x 26mm x 38mm
- Template Fixed
- Tested for 300,000 Cycles

*The stated maximum door width is for standard installation.
In the case of unusually high doors or where the door is located in a draughty or windy position a larger power size of door closer should be used.

Connect with



TECHNICAL SPECIFICATION



For further information on Coburn products and services:

Coburn Sliding Systems India PTE Ltd

Coburn Sliding Systems Ltd

Dealer Stamp