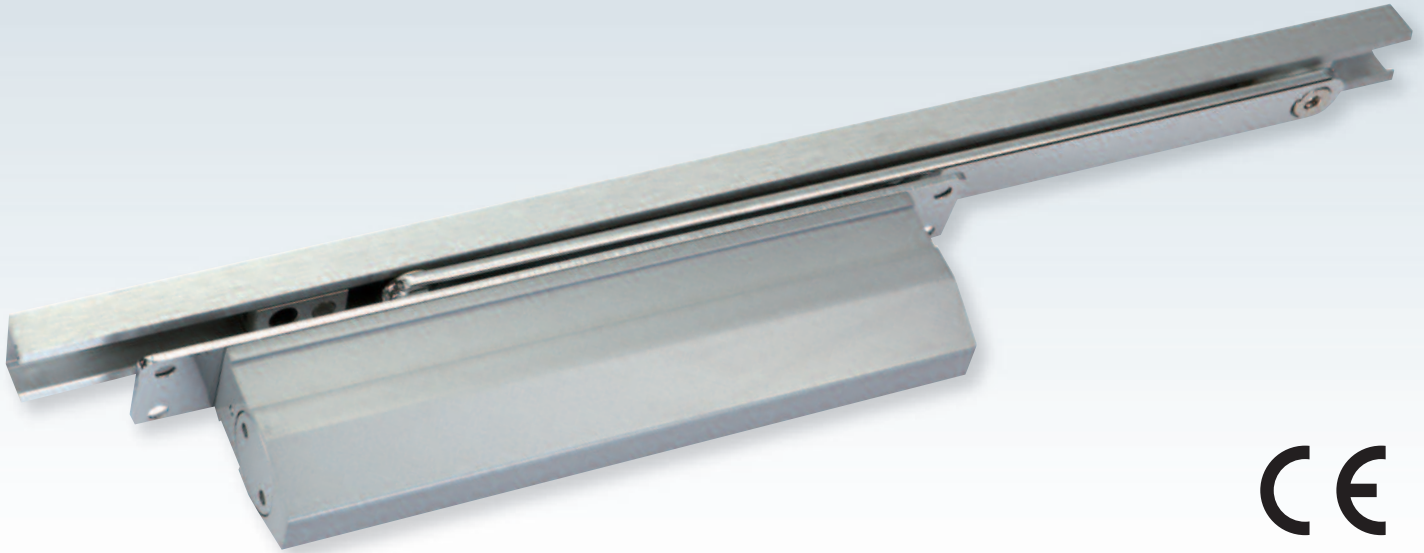


# Coburn Ultima 3F

## Concealed Door Closer

Ultima | Concealed Door Closers  
Coburn Product Data Sheet



### Features

- Concealed door closer with adjustable closing and latching speeds
- Rack and pinion mechanism
- CE marked
- Can be installed with standard or hold open arm
- Non-handed: suitable for left and right hand opening doors
- Back check available as an option

### Technical Specifications

- Maximum Door Weight: 60kg
- Maximum Door Width: 950mm\*
- Closing Force: Fixed Size 3
- Dimensions: 215mm x 53.5mm x 32mm
- Template Fixed
- EN 1154 Classification 383113

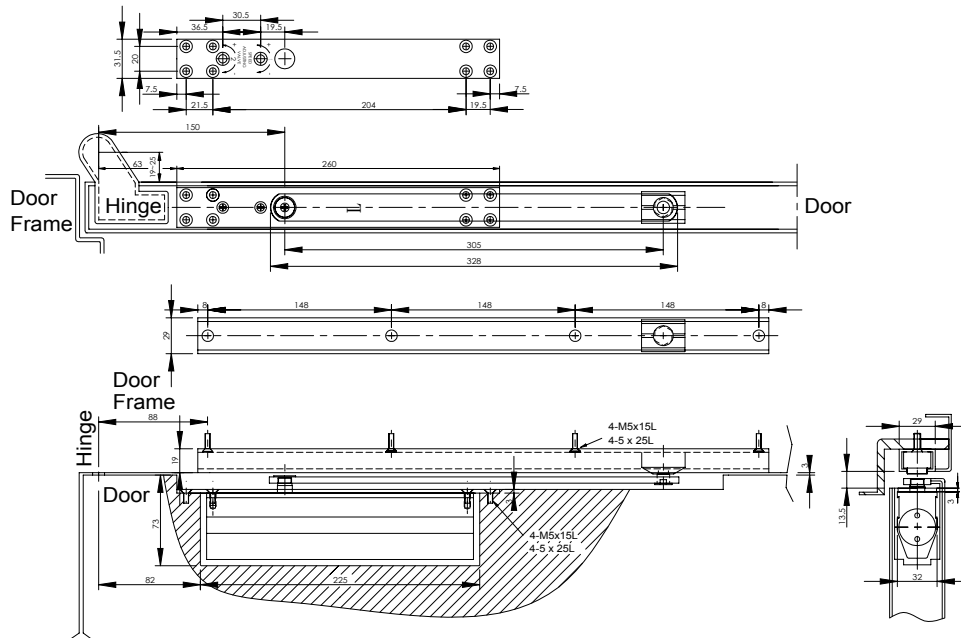
\*The stated maximum door width is for standard installation.  
In the case of unusually high doors or where the door is located in a draughty or windy position a larger power size of door closer should be used.

Connect with 

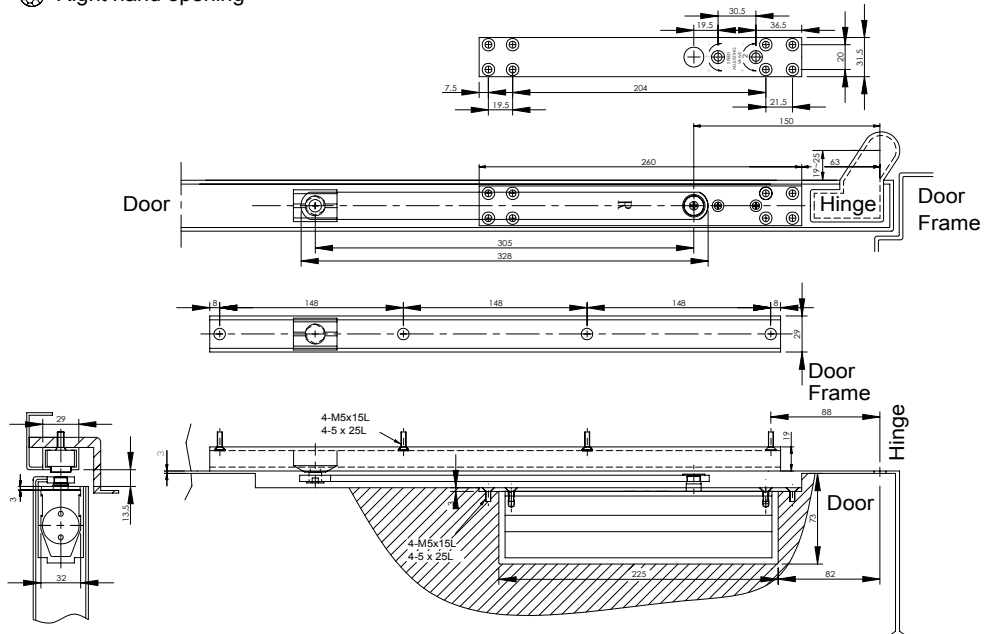
## Concealed Door Closer

### TECHNICAL SPECIFICATION

#### Left hand opening



#### Right hand opening



For further information on Coburn products and services:

**Coburn Sliding Systems India PTE Ltd**  
27 Weston Street, Room No 302,  
3rd Floor, Kolkata – 700012. India  
Tel: 91 33 46011916 - 40084842  
sales@coburn.in  
www.coburn.in

**Coburn Sliding Systems Ltd**  
Unit 1 Cardinal West, Cardinal Way,  
Cardinal Distribution Park,  
Godmanchester, Huntingdon,  
Cambridgeshire. PE29 2XN  
United Kingdom  
Tel: +44 (0)20 8545 6680  
sales@coburn.co.uk  
www.coburn.co.uk

Dealer Stamp