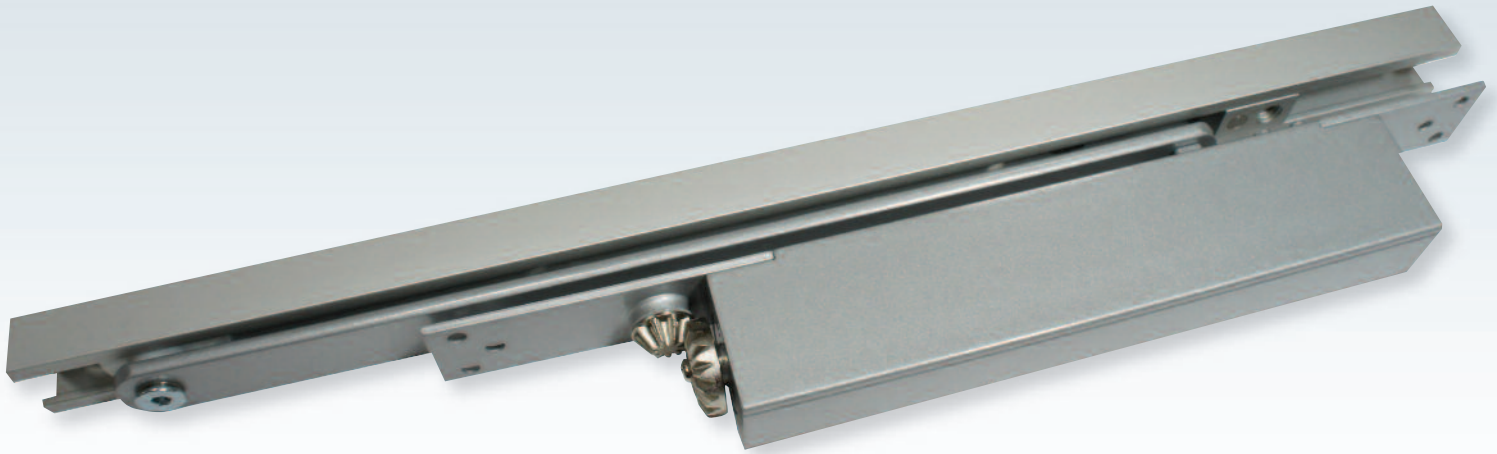


Coburn Ultima 2-4

Concealed Door Closer

Ultima | Concealed Door Closers
Coburn Product Data Sheet



Features

- Concealed door closer with adjustable closing and latching speeds
- CAM action for enhanced efficiency and durability
- Adjustable Closing Force
- Can be installed with standard or hold open arm
- Non-handed: suitable for left and right hand opening doors
- Back check available as an option

Technical Specifications

- Door Weight: 40kg - 180kg
- Closing Force: Size 2 to 4
- Dimensions: 215mm x 42mm x 32mm
- Certified for 500,000 cycles in accordance with EN 1154
- Maximum Door Width: 1100mm*

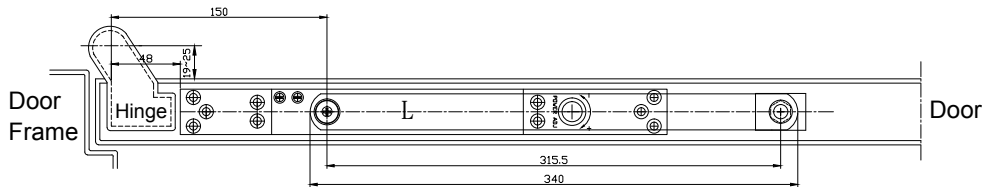
*The stated maximum door width is for standard installation. In the case of unusually high doors or where the door is located in a draughty or windy position a larger power size of door closer should be used.

Connect with  **COBURN**
DOOR SOLUTIONS

Concealed Door Closer

TECHNICAL SPECIFICATION

☉ Left hand opening



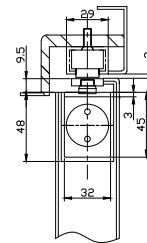
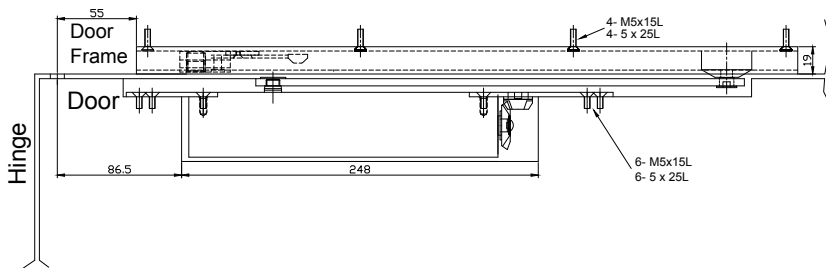
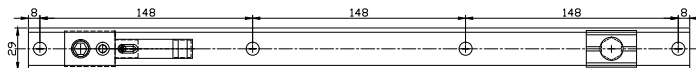
SPRING POWER ADJUSTMENT

ADJUST CLOSER SIZE ACCORDING TO CHART BELOW

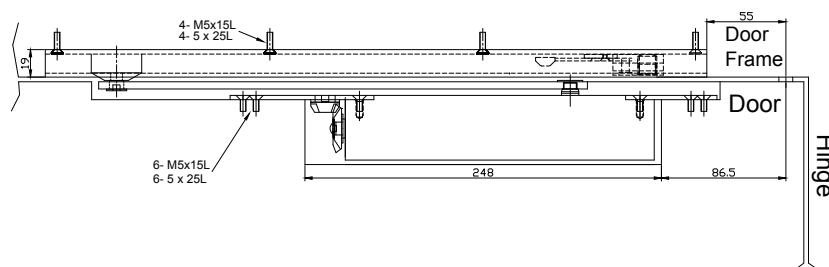
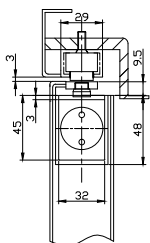
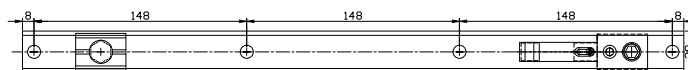
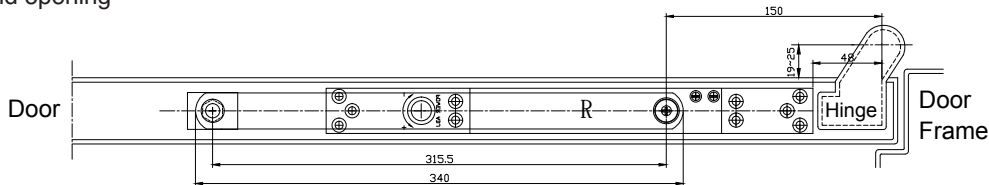
C : CLOCKWISE

* : FACTORY PRE-SET

2~4 MODEL		
NO. OF TURNS	DIRECTION	SIZE
* 0	-	2
8	C	3
20	C	4



☉ Right hand opening



For further information on Coburn products and services:

Coburn Sliding Systems India PTE Ltd
27 Weston Street, Room No 302,
3rd Floor, Kolkata – 700012. India
Tel: 91 33 46011916 - 40084842
sales@coburn.in
www.coburn.in

Coburn Sliding Systems Ltd
Unit 1 Cardinal West, Cardinal Way,
Cardinal Distribution Park,
Godmanchester, Huntingdon,
Cambridgeshire. PE29 2XN
United Kingdom
Tel: +44 (0)20 8545 6680
sales@coburn.co.uk
www.coburn.co.uk

Dealer Stamp