

Coburn Door Closers

For residential, commercial
& industrial applications



Connect with



Specialists in the design and manufacture
of architectural hardware systems

Connect with Coburn Door Solutions

With a heritage in manufacturing and development dating back to 1911 Coburn Sliding Systems Limited has grown to become a major supplier of sliding door systems to the construction and building industries worldwide.

Coburn Door Solutions is the next chapter in the Coburn history, the objective is to offer our customers a range of high quality hardware products for doors.

Through advanced technology, material and styling the Coburn hallmark still promises the ultimate in quality, reliability and service. We understand the importance of accuracy and timing in building design and construction.

The Coburn brand is your assurance of our total dedication in fulfilling your project needs from beginning to end.

Coburn Capabilities

- Expert technical advice
- High quality products
- Versatile product range
- In-house design team
- First-class service deliveries
- Customer focused company



Working with architects and interior designers to ensure a successful solution to each and every project

As architectural systems' specialists we have evolved a passion for manufacturing products that combine form and function. We understand both the aesthetic aspirations and functional requirements of an application and will work closely with you to realise the full potential of your building projects.

Our proactive approach to service means we will always provide transparent and innovative technical advice to support our products and your project. Our ranges of sliding door gear and door closers are designed to give more creative possibilities and transform your concept in to reality.



Coburn is a British Company
founded in 1911

Coburn Door Closers

Door Closers Classifications Guide

Within the European Union all forms of "Controlled door closing devices" are covered by a harmonised European Standard, EN 1154. It provides details on product types and classifies products by use, test cycles, door mass, corrosion resistance and product performance requirements using a six digit classification code.

Door Closers Classifications Guide



Category of use

For all internal and external doors for use by the public



Grade 3: For closing doors from at least 105 degrees open

Grade 4: For closing doors from at least 180 degrees open



Number of test cycles

Grade 8, for example = 500,000 test cycles



Test door mass/size

Seven grades are identified

(See also closing force explained on page 4)



Fire behaviour

Grade 0: Not suitable for use on fire/smoke door assemblies



Grade 1: Suitable for use on fire/smoke door assemblies



Safety

All door closers are required to satisfy the essential requirement of safety in use Only grade 1 is identified



Corrosion resistance

Five grades of resistance are identified to EN 1670

Grade 0: No defined corrosion resistance

Grade 1: Mild resistance (24 hours)

Grade 2: Moderate resistance (48 hours)



Grade 3: High resistance (96 hours)

Grade 4: Very high resistance (240 hours)

Closer Forced Explained:

Within EN 1154 several closer power ratings are identified according to the maximum door leaf weight and width. These are theoretical figures and the final closing power of any door closing device will be subject to any number of variables as shown below:



- Accuracy of closer installation
- Accuracy of door installation
- Friction in hinges
- Negative or positive air pressure

EN Size	Max Door Weight (Kg)	Max Door Width (mm)
1	20	750
2	40	850
3	60	950
4	80	1100
5	100	1250
6	120	1400
7	140	1600

Fire Doors

Within EN 1154 certain recommendations are made for closing devices used on fire door assemblies and include:

- Closers size 1 and 2 are not considered suitable for use on fire doors
- Door closers shall not include a hold open device unless it is an electrically powered device connected to the building fire alarm system
- Control regulators shall be either concealed or operable only by means of a tool

Introducing Coburn Concealed and Face Fixed Door Closers

Coburn combine value for money with outstanding performance

We have always delivered engineered quality and innovation as an integral part of our product range. This range of door closers is no exception, British design with leading edge features, outstanding performance and value for money.

DOOR CLOSER SPECIFIER	ULTIMA 2-4	ULTIMA 3-6	ULTIMA 3F	ULTIMA 4F		PRIMA 2-4	PRIMA 3F	PRIMA 4F
CERTIFICATION			CE			CE	UL LISTED	UL LISTED
Approval for fire and smoke protection	●	●	●	●		●	●	●
Closing force in accordance with EN 1154	2-4	3-6	3	4		2-4	3	4
Door leaf width (max) in mm	1100	1400	953	1100		1100	950	1100
Leaf weight (max) in kg	80	120	60	80		80	65	85
APPLICATION POSSIBILITIES								
Closer body integrated in the door leaf (Concealed)	●	●	●	●		●	●	●
Face fixed	●	●	●	●		●	●	●
Opening angle (max)	120°	120°	120°	120°		180°	180°	180°
Non handed	●	●	●	●		●	●	●
FUNCTIONS								
Back check, adjustable (OPTIONAL)	●	●	●	●		●	●	●
Latching action, adjustable	●	●	●	●		●	●	●
Closing speed, adjustable	●	●	●	●		●	●	●
Mechanical hold-open device (Not suitable for use on fire door applications)	●	●	●	●		●	●	●
Closing force, adjustable	●	●	●	●		●	●	●

● = Yes ● = No HOS = Hold Open System

Ultima 2-4



Concealed Door Closer



Features

- Concealed door closer with adjustable closing & latching speeds
- CAM action for enhanced efficiency and durability
- Adjustable Closing Force
- Can be installed with standard or hold open arm
- Non-handed: suitable for left and right hand opening doors
- Back check available as an option

Technical Specifications

- Door Weight: 40kg - 180kg
- Closing Force: Size 2 to 4
- Dimensions: 215mm x 42mm x 32mm
- Certified for 500,000 cycles in accordance with EN 1154
- Maximum Door Width: 1100mm*

*The stated maximum door width is for standard installation.

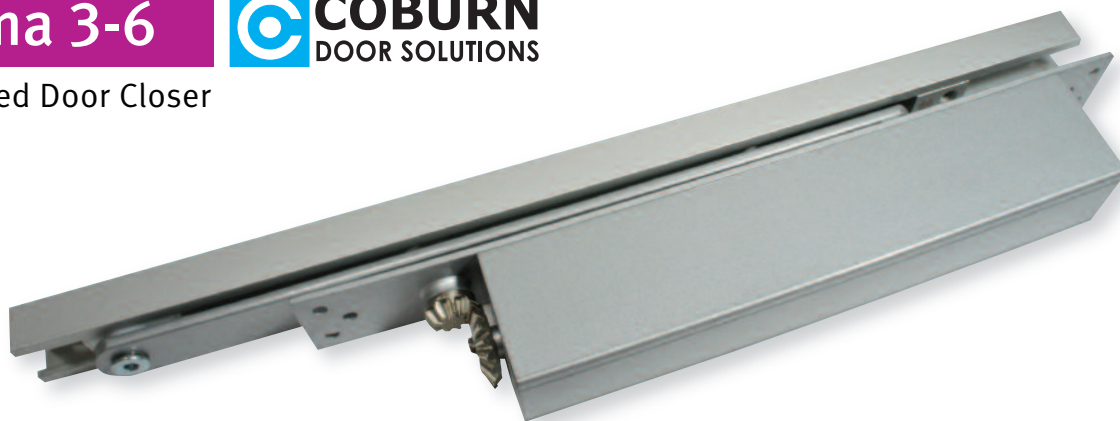
In the case of unusually high doors or where the door is located in a draughty or windy position a larger power size of door closer should be used.

- **Technical Data Sheet** Available on request for more detailed information.

Ultima 3-6



Concealed Door Closer



Features

- Concealed door closer with adjustable closing & latching speeds
- CAM action for enhanced efficiency and durability
- Adjustable Closing Force
- Can be installed with standard or hold open arm
- Non-handed: suitable for left and right hand opening doors
- Back check available as an option

Technical Specifications

- Door Weight: 60kg - 120kg
- Closing Force: Size 3 to 6
- Dimensions: 250mm x 51mm x 40mm
- Certified for 500,000 cycles in accordance with EN 1154
- Maximum Door Width: 1400mm*

*The stated maximum door width is for standard installation.

In the case of unusually high doors or where the door is located in a draughty or windy position a larger power size of door closer should be used.

- **Technical Data Sheet** Available on request for more detailed information.

Ultima 3F



Concealed Door Closer



Features

- Concealed door closer with adjustable closing & latching speeds
- Rack and pinion mechanism
- CE marked
- Can be installed with standard or hold open arm
- Non-handed: suitable for left and right hand opening doors
- Back check available as an option

Technical Specifications

- Maximum Door Weight: 60kg
- Maximum Door Width: 950mm*
- Closing Force: Fixed Size 3
- Dimensions: 215mm x 53.5mm x 32mm
- Template Fixed
- EN 1154 Classification 383113

*The stated maximum door width is for standard installation.

In the case of unusually high doors or where the door is located in a draughty or windy position a larger power size of door closer should be used.

- **Technical Data Sheet** Available on request for more detailed information.

Ultima 4F



Concealed Door Closer



Features

- Concealed door closer with adjustable closing & latching speeds
- Rack and pinion mechanism
- Can be installed with standard or hold open arm
- Non-handed: suitable for left and right hand opening doors
- Back check available as an option

Technical Specifications

- Door Weight: 80kg
- Maximum Door Width: 1100mm*
- Closing Force: Fixed Size 4
- Dimensions: 215mm x 53.5mm x 32mm
- Template Fixed
- Certified for 500,000 cycles in accordance with EN 1154

*The stated maximum door width is for standard installation.

In the case of unusually high doors or where the door is located in a draughty or windy position a larger power size of door closer should be used.

- **Technical Data Sheet** Available on request for more detailed information.

Prima 2-4



Face Fixed Door Closer

Features

- High strength die cast aluminium body
- Adjustable closing and latching speeds
- All weather finish for working temperature 55°C to -42°C
- Adjustable Closing Force: Size 2 to 4
- Standard regular arm and top frame installation
- Parallel arm bracket for parallel arm installation (optional)
- Available with hold open (optional)
- Rack and pinion mechanism
- Non-handed: suitable for left and right hand opening doors
- Back check available as an option
- CE Marked (0359-CPR-00727)

Technical Specifications

- Door Weight: 20 - 80kg
- Closing Force: Size 2 to 4
- Dimensions: 220mm x 50mm x 44mm
- BS EN 1154 Classification 482-4114

*The stated maximum door width is for standard installation. In the case of unusually high doors or where the door is located in a draughty or windy position a larger power size of door closer should be used.



- **Technical Data Sheet** Available on request for more detailed information.

Prima 3F



Face Fixed Door Closer

Features

- High strength die cast aluminium body
- Adjustable closing and latching speeds
- All weather finish for working temperature 55°C to -42°C
- Standard regular arm and top frame installation
- Parallel arm bracket for parallel arm installation (optional)
- Rack and pinion mechanism
- Non-handed: suitable for left and right hand opening doors
- Back check available as an option

Technical Specifications

- Door Weight: 45 - 60kg
- Maximum Door Width: 950mm*
- Closing Force: Fixed Size 3
- Dimensions: 178mm x 39mm x 62mm
- UL Certified (R39475)
- Tested for 3 Hours Fire Rating
- HL 10C up to 3 hours fire rating

*The stated maximum door width is for standard installation. In the case of unusually high doors or where the door is located in a draughty or windy position a larger power size of door closer should be used.



- **Technical Data Sheet** Available on request for more detailed information.

Face Fixed Door Closer

Features

- High strength die cast aluminium body
- Adjustable closing and latching speeds
- All weather finish for working temperature 55°C to -42°C
- Standard regular arm and top frame installation
- Parallel arm bracket for parallel arm installation (optional)
- Rack and pinion mechanism
- Non-handed: suitable for left and right hand opening doors
- Back check available as an option

Technical Specifications

- Door Weight: 65 - 80kg
- Maximum Door Width: 1100mm*
- Closing Force: Fixed Size 4
- Dimensions: 204mm x 42mm x 71mm
- UL Certified (R39475)
- HL 10C up to 3 hours fire rating



*The stated maximum door width is for standard installation. In the case of unusually high doors or where the door is located in a draughty or windy position a larger power size of door closer should be used.



• **Technical Data Sheet** Available on request for more detailed information.



Coburn Door Closers

A comprehensive range
for residential, commercial &
industrial applications

QUALITY ASSURANCE

We are committed to the highest standards of excellence

Constant testing to the latest BS EN ISO 9001 Standards ensures that quality is maintained and a programme of product improvement is regularly reviewed and updated. Below are some of our current accreditations and trade associations memberships.



For further information on
Coburn products and services:

Coburn Sliding Systems India PTE Ltd

27 Weston Street, Room No 302,
3rd Floor, Kolkata – 700012.
India

Tel : 91 33 46011916 - 40084842
sales@coburn.in
www.coburn.in

Coburn Sliding Systems Ltd

Unit 1 Cardinal West, Cardinal Way,
Cardinal Distribution Park, Godmanchester,
Huntingdon, Cambridgeshire. PE29 2XN
United Kingdom

Tel: +44 (0)20 8545 6680
sales@coburn.co.uk
www.coburn.co.uk

Dealer Stamp